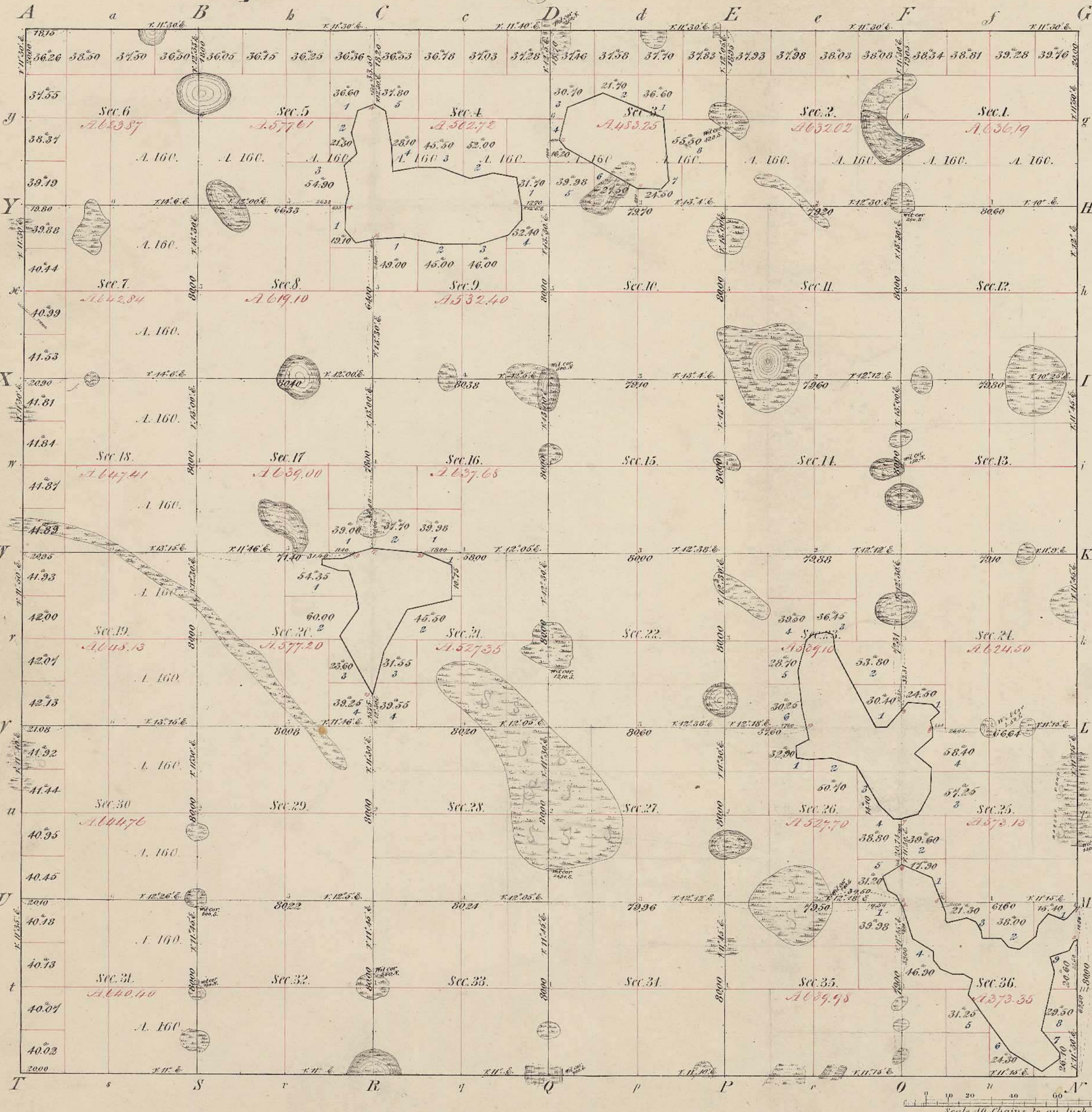


Township No 113. N. Range No 40. W. 5th Mer. Min.



Meanders of			Meanders of			Meanders of		
Posts	Courses	Ch. Lk.	Posts	Courses	Ch. Lk.	Posts	Courses	Ch. Lk.
Meanders			No. Co. L.					

Total number of Acres. *21,809.71*

Surveys Designated	By Whom Surveyed	Date of Contract	Amount of Surveys	When Survey Completed	When p'd for and ch'd in the Sur. Gen.'s acc't
Township lines	W. J. Neely	Oct 15th & Aug 1850	M. Ch. Lks. 72. 00. 00	Sept 27th 1852	
Subdivisions	M. Black	25th June 1852	70. 56. 06	1st Sep. 1852	

The above Map of Township No 113 North of Range No 40 West of the 5th Principal Meridian of Minnesota is strictly conformable to the field notes of the survey thereof on file in this Office, which have been examined and approved.

Surveyor General's Office.
 St Paul Dec 10 1852 } *Charles L. Emerson*
 Sur. Gen.

3rd Stan' Pur'