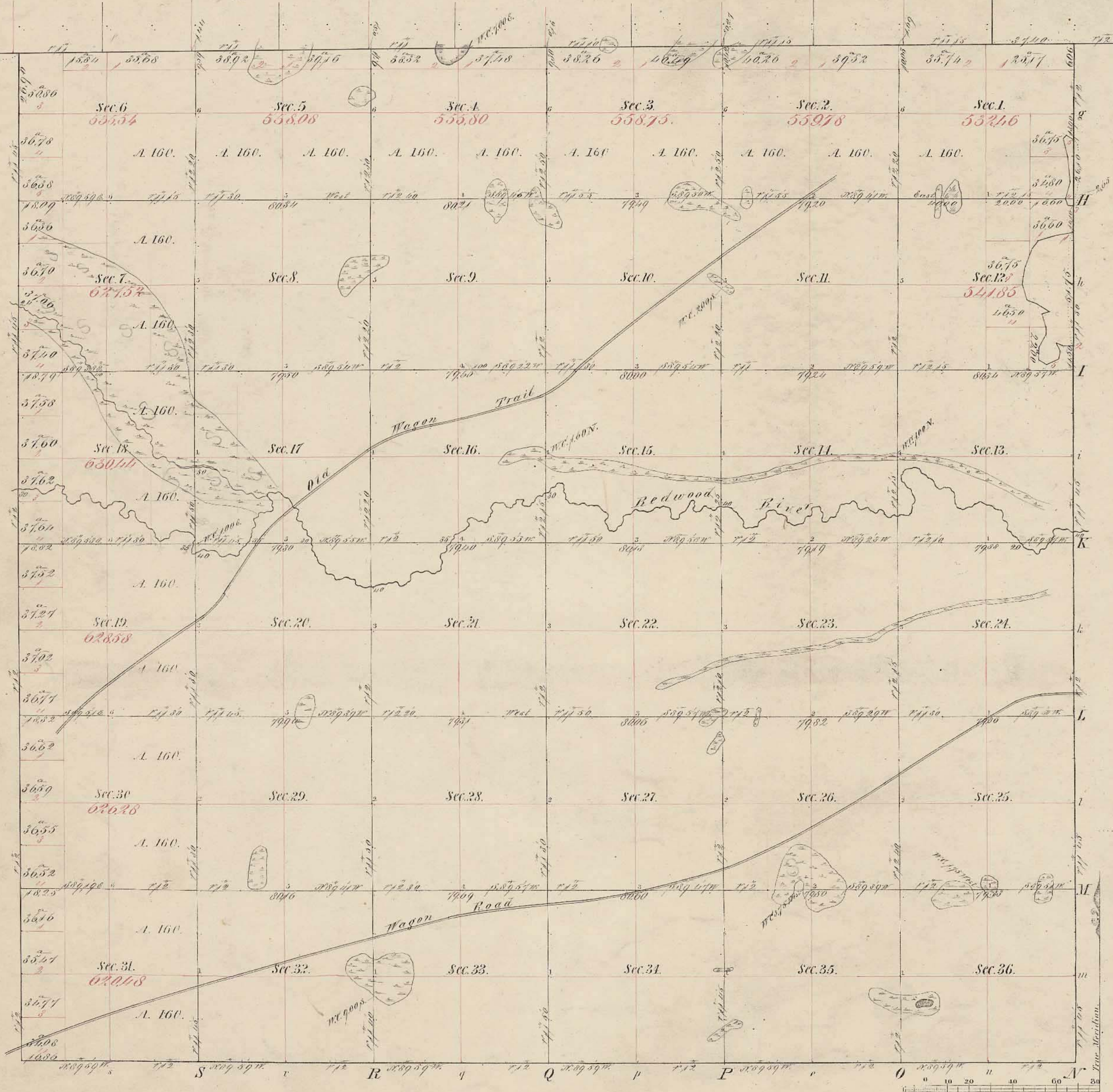


Township N^o 112 N. Range N^o 40 W. 5th Mer.

| Meanders of | | | | | | | | |
|--|---------|---------------------------------|-------|---------|---------------------------------|-------|---------|---------------------------------|
| Posts | Courses | Ch ^s Lk ^s | Posts | Courses | Ch ^s Lk ^s | Posts | Courses | Ch ^s Lk ^s |
| Meanders One M ^o seventy Ch ^s Eighty three Lk ^s | | | | | | | | |



Total number of Acres 22535.50

| Surveys Designated | By Whom Surveyed | Date of Contract | Amount of Surveys | When Surveyed | When p ^d for and ch ^d in the Sur ^g Gen ^l 's acc ^t |
|--------------------|------------------|----------------------------|------------------------------------|---------------|--|
| Township lines | J. W. Bishop | | M. Ch ^s Lk ^s | 1866 | |
| Subdivisions | Jewett & Howe | April 6 th 1867 | 61 03 00 | 1867 | |

The above Map of Township N^o 112 N. of Range N^o 40 W. of 5th Principal Meridian, Minnesota is strictly conformable to the field notes of the survey thereof on file in this Office, which have been examined and approved.
 Surveyor General's Office,
 Saint Paul Dec 11th 1867
 L. Nutting Sur. Genl.